

Nathalie Amirault, Head of Expertise Development UIC International HR & training strategy



INTERNATIONAL UNION
OF RAILWAYS



UIC's Missions

Promoting the development of rail transport at world level, in order to meet challenges of mobility and Sustainable Development.

KEY CHALLENGES

INNOVATION

STANDARDISATION

TRANSMISSION

DISSEMINATION

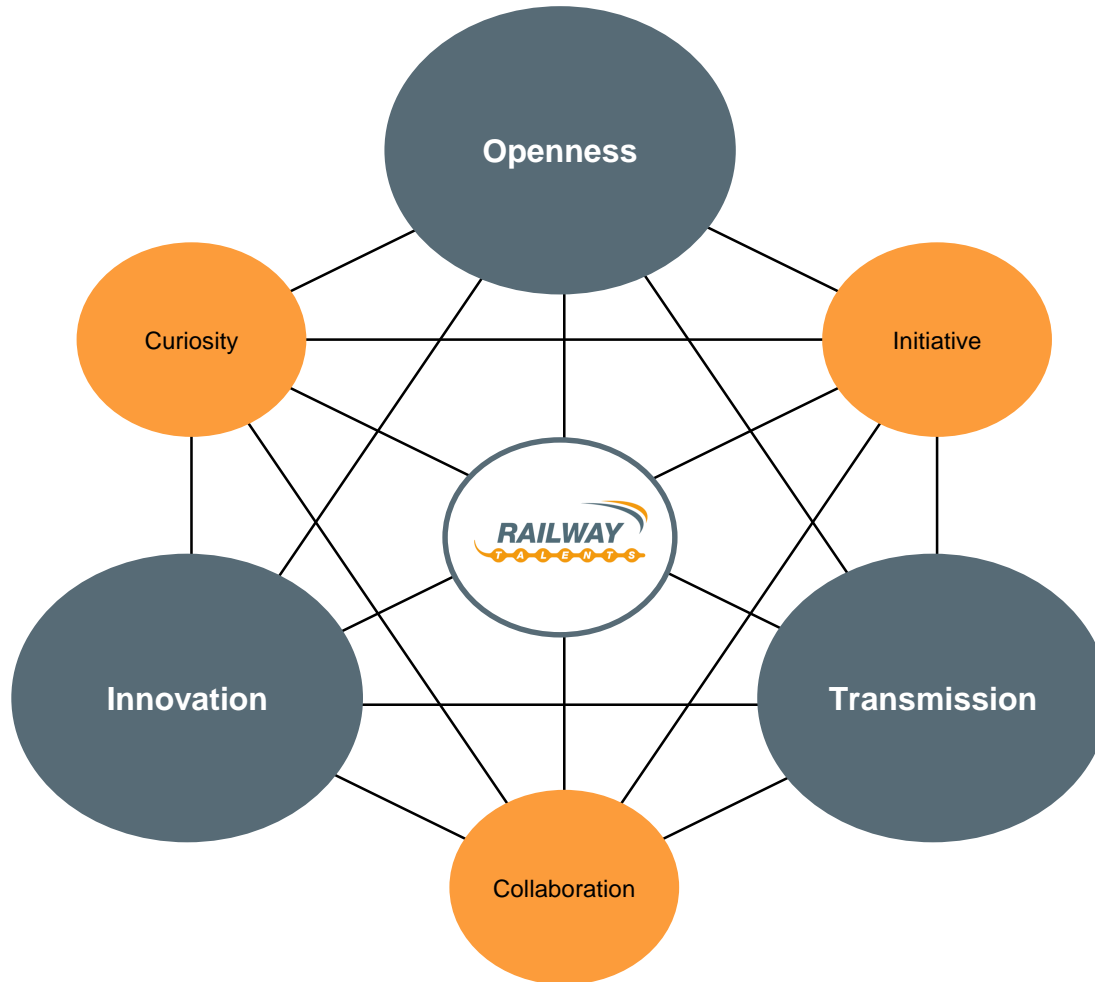
STRATEGIC ADVICE

The mission of Expertise development is

To enhance workforce development and quality of rail training through exchanges of best practices, benchmarking activity, co-operation projects

- The railway sector is a rapidly developing & changing sector
- This has an impact on skills requirements & jobs
- Training and education must contribute to the enhancement of the rail sector
- Need for new learning environment: digital shift

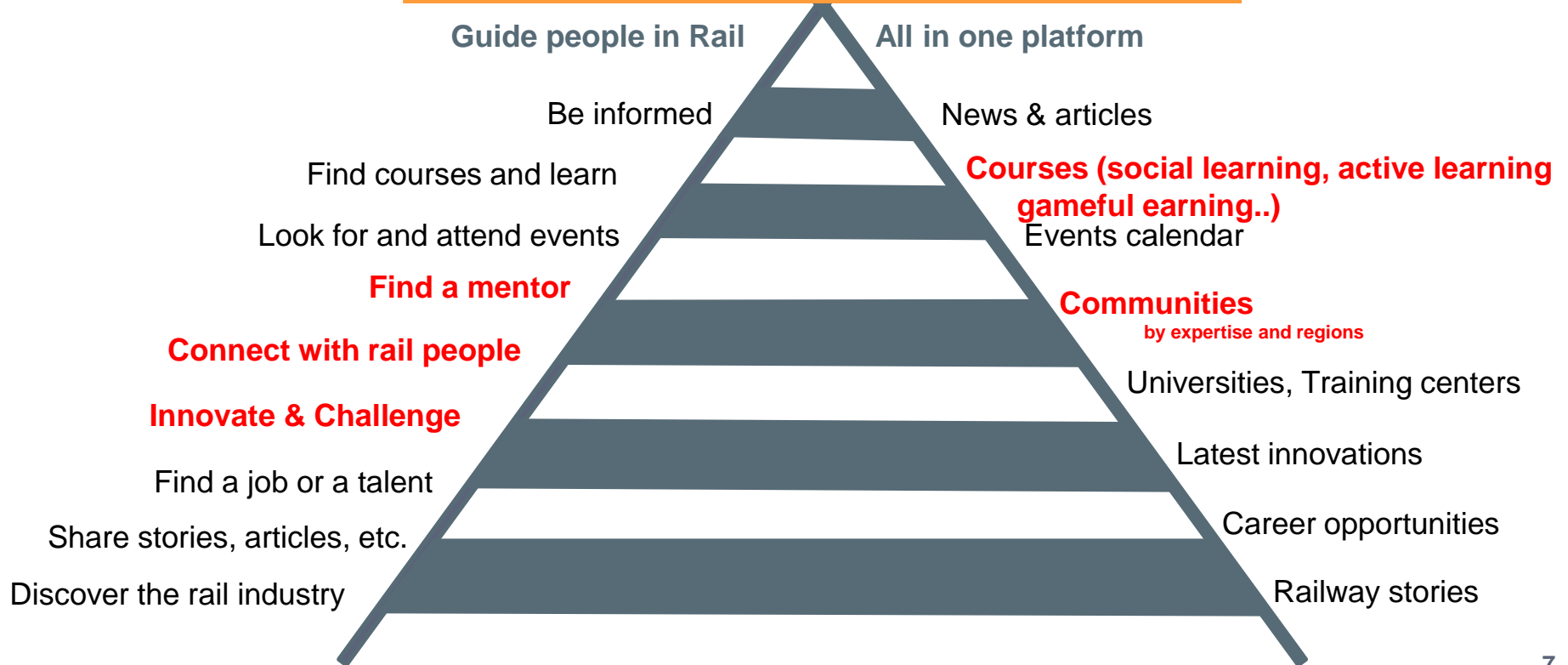
CORE VALUES



VISION & MISSION



The Railway Talent Development Platform Worldwide
www.railtalent.org



Railways need talents able to operate on the global stage and to collaborate across functions as well as cultures

Digitization can help organizations unleash the power of collective intelligence

It requires not just a shift in tools and approaches, but also an agile, engaged organization

Thank you for your attention



INTERNATIONAL UNION
OF RAILWAYS

AMIRAULT@UIC.ORG



WWW.UIC.ORG
WWW.RAILTALENT.ORG